



# Lab Wisely

## 1 What is the impact of inappropriately ordered laboratory tests?

An estimated 20–50% of all testing is inappropriately ordered (an incorrect test, a redundant test or a correct test ordered at the wrong time).

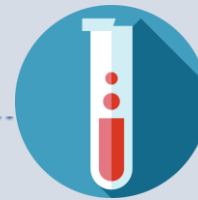
### Mismanaged Time

Clinical efforts are misdirected to unnecessary tasks and do not effectively use the expertise of medical laboratory professionals.



### Patient Harm

Inappropriate testing can increase the patient's risk of harm, both physically and psychologically.



### Wasted Resources

Almost \$6 billion is spent annually on lab testing by provincial and territorial governments, and about 10% of that is unnecessary.



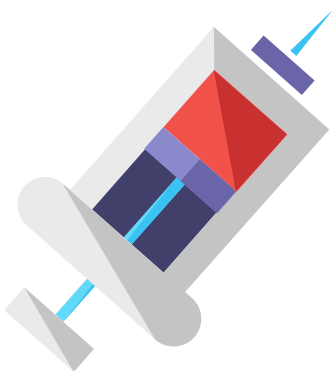
### Workload Burden

There is a national shortage of medical laboratory technologists in Canada. Inappropriate testing unnecessarily adds to your workload.

[www.labwisely.ca](http://www.labwisely.ca)

## 2 What tests are inappropriately ordered in your lab?

CSMLS members identified their top three:



1. Complete Blood Count (CBC)
2. Erythrocyte Sedimentation Rate (ESR)
3. Vitamin D



What are your top 3?



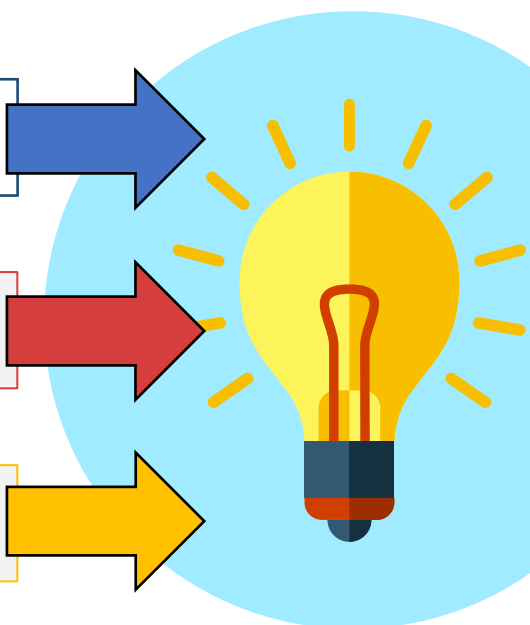
### 3 How do I get informed and involved?

92% of CSMLS members believe that initiatives to limit inappropriate laboratory utilization are important. However:

60% believe they can have a positive impact on laboratory ordering practices by participating in utilization initiatives.

46% believe that becoming involved in utilization initiatives is part of their professional responsibilities.

58% believe that inappropriate utilization may contribute to patient harm. 23% were "unsure."



**YOU CAN MAKE CHANGE HAPPEN!**

**Be a Lab Wisely Advocate:**

- Ask questions
- Get informed
- Visit [labwisely.ca](http://labwisely.ca)
- Recognize your professional duties
- Start a local discussion
- Join projects
- Share your experience

Choosing Wisely Canada inspires and engages health care professionals to take leadership in reducing unnecessary tests, treatments and procedures, and enables them with simple tools and resources that make it easier to choose wisely.

[choosingwiselycanada.org](http://choosingwiselycanada.org)

### 4 What project should I start with?

In partnership with Choosing Wisely Canada, we created a list of "don't do" recommendations specifically for medical laboratory professionals.



Approximately 1/3 of all Choosing Wisely Canada recommendations directly impact the work of clinical laboratories.



Search our database to find recommendations that apply to your lab!



[www.labwisely.ca](http://www.labwisely.ca)